

# LIBRARY & INFORMATION CENTRE

Central library is truly a learning center built with 780 sq.m. of carpet area spreading over three halls to accommodate more than 150 students at a time. The library stock contains textbooks, reference books, journals, audio, video lectures, back volumes and project reports etc. The Library subscribes more than 56 national and international journals and has a very large collection of reference books on advanced disciplines that are aimed at developing students beyond their normal curriculum. In Central library more than 17562 volumes and around 2931 titles covering various advanced disciplines pertaining to all the branches of engineering courses.

Automated Library House Keeping operations are working by using *NewGenLib* library integrated software. Modules of the software include: Technical Processing, Circulation, Acquisition, Serials Management, Open Access Catalogue (OPAC), Administration, Queries and Reports.

Digital library is well equipped with 25 multimedia systems to access e-journals, e-books of International standards through databases like Tailor & Francis, J-Gate, N-LIST (National Library and Information Services Infrastructure for Scholarly Content.), and DELNET etc..

The library aim to develop a comprehensive collection of documents useful for the students, faculty and research community of the Institution.



## Library Rules

- The SVEC Library follows an open access system except text books in the reserve section.
- Library is following Dewey Decimal Classification Scheme (000 – 999) for the shelf arrangement of books.
- While entering the library, readers should leave their personal belongings, such as bags, brief-cases, personal books and parcels near the counter reserved for this purpose. However, they can carry loose papers, note books and Laptop (without bag).
- Switch off your mobiles while entering the library.
- Books or other materials taken from the stacks should not be re-shelved by the readers. Books should be left on the reading table after use.
- Readers should maintain peace in the library and should not disturb other users in any way.

- Eatable items are strictly prohibited.
- Chairs and tables should not be disturbed from their position.
- Users should avoid resting their feet on tables, chairs, shelves, window sills.
- Readers leaving the library should allow the library/security staff to examine reading material their personal belongings.
- Issued materials should be protected from Rain, Dust, Insects, etc.
- Readers should not deface, mark, cut, mutilate or damage library material in any way. If anyone is found doing so, he/she will be charged the full replacement cost of the material.
- Personal papers and non-library materials should not be left unattended on tables.
- Do not move books/journals from their specific area to another area.
- Do not give your Id-card to others.
- The holder of ID-Card is responsible for any book issued against it as shown by library records.
- If one book of a set is damaged or lost, the member concerned shall be liable to replace the whole set.

**Please Do:**

- Show the documents which are being taken out of the library, to the staff at the check point.
- Contact the staff on duty/section staff for any queries.
- Keep the Library premises tidy.

## Working Hours

- Working days : 08.00 AM to 06.00 PM
- Circulation Section(Working days) : 08.00 AM to 06.00 PM
- Sunday : 09.00 AM to 04.00 PM
- Vacation : 09.00 AM to 04.00 PM

## Membership

Membership is open to all the staff and students of the college.

### Membership Category

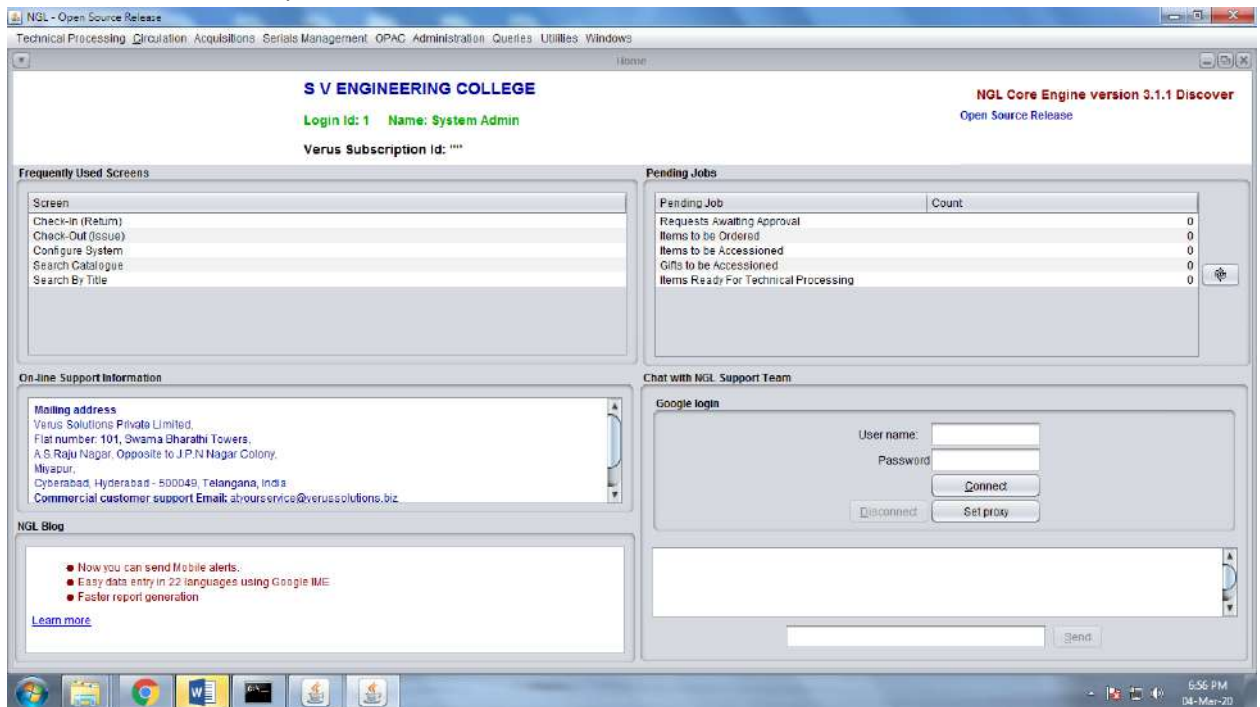
Category	No. Books issued	Duration
Under Graduate	2	15 days
Post Graduate	3	15 days
Teaching	6	1 semester
Nonteaching	2	15 days

### Text books access for top rank students

- Students who secure top 3 positions in JNTUA Exams from each section of the respective branch of study are eligible to access library books throughout the Semester.

## Online Public Accessing Catalogue (OPAC)

- OPAC provides the access to the SVEC library database.
- OPAC allows the users to know the library collection and the status of the library document.
- OPAC allows the users to search the database by Title, Author, Accession number, ISBN number, Publisher of the Book/document.



## Reprographic Facilities (Photocopying)

- Photocopying facility is available for students, at a nominal cost.



## Periodical Section

- Subscribed more than 56 journals and magazines for Students, Research scholars and Teaching and Non-Teaching fraternity of the institution.
- Current periodicals and journals are displayed in the periodical section.



## Library Staff

S.No.	Name of the staff	Designation	Qualification	Experience	Photo
1	K. Ramesh	Librarian	MA, MLISc, PGDLAN.	17 Years	
2	Dr. C. Srinivasa Raju	Librarian	M.A., M.L.I.Sc., M.Phil., Ph.D.	19 Years	
3	K. Kodandaramaiah	Asst. Librarian	MA, MLISc. UGCNET, APSET	12 Years	
4	B. Chenga Reddy	Programmer	B.Tech.	5 Years	
5	P. Sulocahana	Attender	Intermediate	3 Years	

## Library Collections

S.No:	Branch	Titles Available	Volumes Available	National/ International Journals Print	e-Journals
1.	B.Tech. EEE	600	3335	06	Tailor & Francis J –Gate DELNET N-LIST
2.	B.Tech. ECE	732	3820	06	
3.	B.Tech. CSE	852	5152	06	
4.	B.Tech. IT	122	1023	06	
5.	S & H	422	3430		
6.	M.Tech.	203	802	32	
7.	SC Book Bank	37	584		
8.	Project Reports	653	653		
9.	CD's/DVD's	1087	1087		

## List of Print Journals and Magazines Collections

S. No.	Branch	Name of the Journal	Publisher
1	EEE	Indian Journal of Power and River Valley Development	Books&Jnls
2	EEE	International Journal of Electrical and Electronics Engineering (IJEED)	IASET
3	EEE	Journal on Power system Engineering	I-Manager
4	EEE	Inventi Impact: Energy & Power	Inventi
5	EEE	Inventi Impact: Power Electronics	Inventi
6	EEE	Journal of Control & Instrumentation	STM
7	Magazine	Electrical India (Electrical)	Chary Pub
8	Magazine	Lighting India (Electrical)	Chary Pub
9	ECE	Journal of information knowledge & research in Electronics & communication engineering	AES
10	ECE	Electronic Devices	Dline
11	ECE	Indian Journal of VLSI Design	GRP
12	ECE	Inventi Impact: Sensing & Actuation	Inventi
13	ECE	Journal on Image Processing	I-Manager
14	ECE	I-Manager Journal on Image Processing	I-Manager
15	ECE	Journal on Communication Engineering and Systems (JCS)	I-Manager
16	ECE	Journal on Digital Signal Processing (JDP)	I-Manager
17	ECE	Journal on Electronics Engineering (JELE)	I-Manager
18	ECE	Journal on Embeded Systems (JES)	I-Manager
19	ECE	Journal on Future Engineering and Technology (JFET)	I-Manager
20	ECE	ISSS Journal of Micro and Smart Systems	Spr-Ind
21	ECE	International Journal of Advance Mechatronic & Robotics	RIP
22	ECE	International Journal of VLSI Design	Serials
23	ECE	International Journal of Wireless Communications and Networking (IJWCN)	Serials

24	ECE	International Journal of Electronics and Communication Engineering (IJECE)	IASET
25	ECE	IOSR Journal of VLSI and Signal Processing	IOSR
26	ECE	ICTACT Journal on Communication Technology	ICTACT
27	Magazine	Electronics Bazar (Electronics)	EFY
28	Magazine	Electronics for You	EFY
29	CSE	International Journal of Engineering in Computer Science	Aknik
30	CSE	International Journal of Data Mining and Emerging Technologies	Diva
31	CSE	International Journal of Information Dissemination and Technology	IJIDT
32	CSE	International Journal of Software Engineering and Computing	Serials
33	CSE	International Journal of Computational Linguistics Research	Dline
34	CSE	International Journal of Network and Mobile	Serials
35	CSE	Journal of Information Knowledge & Research in Information Technology Engineering	AES
36	CSE	Journal of Innovation in Computer Science and Engineering	Diva
37	CSE	Research Journal of Science and Technology	Diva
38	CSE	Information Security Education Journal	Dline
39	CSE	Journal of data Processing	Dline
40	CSE	Journal of Information Organisation	Dline
41	CSE	Journal of Information systems Management	Dline
42	CSE	Journal of Intelligent Computing	Dline
43	CSE	Journal of Multimedia Processing and Technologies	Dline
44	CSE	Journal of Innovation in Information Technology	Gurunanak
45	CSE	Journal on Cloud Computing (JCC)	I-Manager
46	CSE	Journal on Software Engineering (JSE)	I-Manager
47	Magazine	PC Quest	Cyber Media
48	Magazine	<i>Competition Success Review</i>	<i>Magazine</i>
49	IT	Journal of Networking Technology	Dline
50	IT	International Journal of web Applications	Dline
51	IT	Indian Journal of Computer Science	IJM
52	IT	International Journal of Computer Science & Information Technology	Serials
53	IT	Innovation in IT	Diva
54	IT	IUP Journal of Information Technology	IUP
55	Magazine	Express Computer	Ind.Exp
56	Magazine	Careers 360	CSR

## **DIGITAL LIBRARY SERVICES**

- ❖ It is a part of the Central Library with Internet access of 100 mbps Shared.
- ❖ Video Lectures delivered by eminent professors from different IITs are downloaded from the website: <http://nptel.iitm.ac.in> (NPTEL) made available in the Digital Library.
- ❖ It has 25 Computer terminals to access Internet / e-Learning resources, National and International online Journals.

- ❖ The Digital Library holding 583 Books CD's and 504 Project Report CD's covering most of Engineering Subjects.
- ❖ Other e-learning resources :
  - Taylor & Francis online journals : [www.tandfonline.com](http://www.tandfonline.com)
  - J-Gate: [www.jgateplus.com](http://www.jgateplus.com)
  - INFLIBNET-NLIST : <http://nlist.inflibnet.ac.in/user/login.php>
  - DELNET: <http://164.100.247.26/>
  - National Digital Library: <https://ndl.iitkgp.ac.in/>
  - IEEE Back Volumes: <http://172.17.200.12/ieee/>
  - NPTEL Videos: <http://172.17.200.12/LocalGuru/>
  - Indian Journals.com: <http://www.indianjournals.com>
  - SWAYAM: <https://swayam.gov.in/>
  - Vigyanprasar Digital Library: <http://vigyanprasar.gov.in/user-account/>
  - E-Books: <http://172.17.200.12/ieee/>
  - Question Papers: <http://svcolleges.pbworks.com/>
  - Lecture Notes: <http://svcolleges.pbworks.com/>



Digital Library

## Library Photos:



Central Library Entrance



Central Library Side - A



Central Library Side - B



Central Library Book Racks







**Digital Library Entrance**



**Digital Library Inner View**



**Reference Section Entrance**



**Reference Section**



**Reference Section**